


Space Details

Key:	IDEPLUGIN
Name:	Atlassian IDE Plugin
Description:	
Creator (Creation Date):	smaddox (Mar 21, 2008)
Last Modifier (Mod. Date):	smaddox (Mar 21, 2008)

Available Pages

- IDE Plugin Documentation 
 - Overview of the IDE Plugin
 - IDE Plugin Installation Guide
 - System Requirements
 - Installing the IDE Plugin for IDEA
 - IDE Plugin Upgrade Guide
 - Upgrading the IDE Plugin for IDEA
 - IDE Plugin Release Notes
 - Atlassian IDE Plugin 1.0 Release Notes
 - IDE Plugin User Guide
 - Configuring the Plugin
 - Using Bamboo in your Plugin
 - Using Crucible in your Plugin
 - Using JIRA in your Plugin
 - IDE Plugin Keyboard Shortcuts
 - IDE Plugin Knowledge Base
 - Icons
- __newreleaseIDEPlugin
- TreeNavigation

IDE Plugin Documentation

This page last changed on Apr 11, 2008 by [jgorycki](#).


IDE Plugin Documentation	Resources
Installation Guide Upgrade Guide Release Notes IDE Plugin User Guide	<p>If you encounter a problem using the Atlassian IDE Plugin, please contact our support team.</p> <p>This is an open source project. To access the plugin's source code, point your SVN at: https://studio.atlassian.com/svn/PL.</p> <p>Other handy links:</p> <ul style="list-style-type: none">• IDE Plugin Knowledge Base• Javadoc• JIRA Issue Tracker
About the Atlassian IDE Plugin	
JIRACrucibleBamboo There's more information in our Overview of the IDE Plugin .	
 Current released version Atlassian IDE Plugin 1.0 has now been released — see the Atlassian IDE Plugin 1.0 Release Notes	Offline Versions of the Documentation
	You can download the IDE Plugin documentation in PDF, HTML or XML formats.
	Looking for Other Plugins?
	<p>If you're in the wrong place, try these links instead:</p> <ul style="list-style-type: none">• Clover IDE plugins — see the Clover documentation• Plugins for Atlassian products — see plugin information for Confluence, JIRA, Crowd, Bamboo• Resources for plugin developers — see Atlassian Developer Network

Table of Contents

[Overview of the IDE Plugin](#)

[IDE Plugin Installation Guide](#)

- [System Requirements](#)
- [Installing the IDE Plugin for IDEA](#)

[IDE Plugin Upgrade Guide](#)

- [Upgrading the IDE Plugin for IDEA](#)

[IDE Plugin Release Notes](#)

- [Atlassian IDE Plugin 1.0 Release Notes](#)

[IDE Plugin User Guide](#)

- [Configuring the Plugin](#)
- [Using Bamboo in your Plugin](#)
- [Using Crucible in your Plugin](#)
- [Using JIRA in your Plugin](#)
- [IDE Plugin Keyboard Shortcuts](#)

[IDE Plugin Knowledge Base](#)

- [Icons](#)

Overview of the IDE Plugin

This page last changed on Apr 09, 2008 by [smaddox](#).

What is the Atlassian IDE Plugin?

The Atlassian IDE Plugin is an addon for your integrated development environment (IDE). It allows you to pull in and work with the Atlassian products within your IDE. Now you don't have to switch between websites, email messages and new feeds to see what's happening to your project and your code. Instead, you can see the relevant [JIRA](#) issues, [Crucible](#) reviews, [Bamboo](#) build information right there in your development environment.

Supported IDEs

At the moment, the Atlassian IDE Plugin is available for [IDEA](#).

In the future we will develop plugins for other IDEs, such as [Eclipse](#) and [Visual Studio](#).

Integrated Atlassian Products

The Atlassian IDE Plugin integrates the following Atlassian products into your IDE:

- [JIRA](#) — because you've got [issues](#)
- [Crucible](#) — peer code review made [painless](#)
- [Bamboo](#) — the Zen of [continuous integration](#)

Plugin License and Copyright

Copyright 2008 Atlassian

Licensed under the Apache License, Version 2.0 (the "License");
you may not use this file except in compliance with the License.
You may obtain a copy of the License at

<http://www.apache.org/licenses/LICENSE-2.0>

Unless required by applicable law or agreed to in writing, software
distributed under the License is distributed on an "AS IS" BASIS,
WITHOUT WARRANTIES OR CONDITIONS OF ANY KIND, either express or implied.
See the License for the specific language governing permissions and
limitations under the License.

IDE Plugin Installation Guide

This page last changed on Apr 08, 2008 by [smaddox](#).

- [System Requirements](#)
- [Installing the IDE Plugin for IDEA](#)

RELATED TOPICS

[IDE Plugin Release Notes](#)
[IDE Plugin Upgrade Guide](#)
[Configuring the Plugin](#)

System Requirements

This page last changed on Apr 09, 2008 by [smaddox](#).


Essentials

You definitely need:

1. [IntelliJ IDEA](#) 7.0.2 or above
2. Windows, Linux, OS X, or whatever IDEA supports
3. Java 5

Atlassian Products

The Atlassian IDE Plugin works with the following versions of Atlassian products:

- JIRA — a recent version.
 We have tested with JIRA 3.12, so the plugin will definitely work with JIRA 3.12 or later. It should work with earlier versions too, but we haven't tried yet. We are not using any super-new features. If you use the plugin with earlier versions of JIRA, please let us know how it goes! You can add comments to this documentation page.
- Bamboo 1.x or Bamboo 2.x
- Crucible 1.5

Support for other products will be added in future versions of the plugin. If you would like to have a say in the prioritisation of plugin development tasks, please go to our [issue tracker](#). There you can:

- Search to see if your issue or request already exists.
- Vote for it if you find it already there.
- Create a new ticket — please select a type of 'Story'.

RELATED TOPICS

[IDE Plugin Installation Guide](#)
[Overview of the IDE Plugin](#)

Installing the IDE Plugin for IDEA

This page last changed on Apr 10, 2008 by [smaddox](#).

System Requirements


Essentials

You definitely need:

1. [IntelliJ IDEA](#) 7.0.2 or above
2. Windows, Linux, OS X, or whatever IDEA supports
3. Java 5

Atlassian Products

The Atlassian IDE Plugin works with the following versions of Atlassian products:

- JIRA — a recent version.
 -  We have tested with JIRA 3.12, so the plugin will definitely work with JIRA 3.12 or later. It should work with earlier versions too, but we haven't tried yet. We are not using any super-new features. If you use the plugin with earlier versions of JIRA, please let us know how it goes! You can add comments to this documentation page.
- Bamboo 1.x or Bamboo 2.x
- Crucible 1.5

Support for other products will be added in future versions of the plugin. If you would like to have a say in the prioritisation of plugin development tasks, please go to our [issue tracker](#). There you can:

- Search to see if your issue or request already exists.
- Vote for it if you find it already there.
- Create a new ticket — please select a type of 'Story'.

The Easy Way

1. Open the IDEA plugin manager.
2. Right-click 'Atlassian' in the 'Available' plugins tab.
3. Select 'Download and Install'.

The Hard Way

1. Go to <http://docs.atlassian.com/atlassian-idea-plugin/>.
2. Select the directory with the latest version.
3. Click the 'Download' link in the upper-left corner.
4. Grab the `atlassian-idea-plugin-<version>.zip` file.
5. Unzip it into your IDEA plugin directory:
 - Windows: `C:\Documents and Settings\<username>\.IntelliJ IDEA 7.0\config\plugins`
 - OS X: `$HOME/Library/Application Support/IntelliJ IDEA 7.0`
 - Linux/Unix: `$HOME/.IntelliJ IDEA 7.0/config/plugins`

RELATED TOPICS

[Configuring the Plugin](#)

[Upgrading the IDE Plugin for IDEA](#)

[Overview of the IDE Plugin](#)

IDE Plugin Upgrade Guide

This page last changed on Mar 21, 2008 by [smaddox](#).

- [Upgrading the IDE Plugin for IDEA](#)

RELATED TOPICS

[IDE Plugin Release Notes](#)

[IDE Plugin Installation Guide](#)

Upgrading the IDE Plugin for IDEA

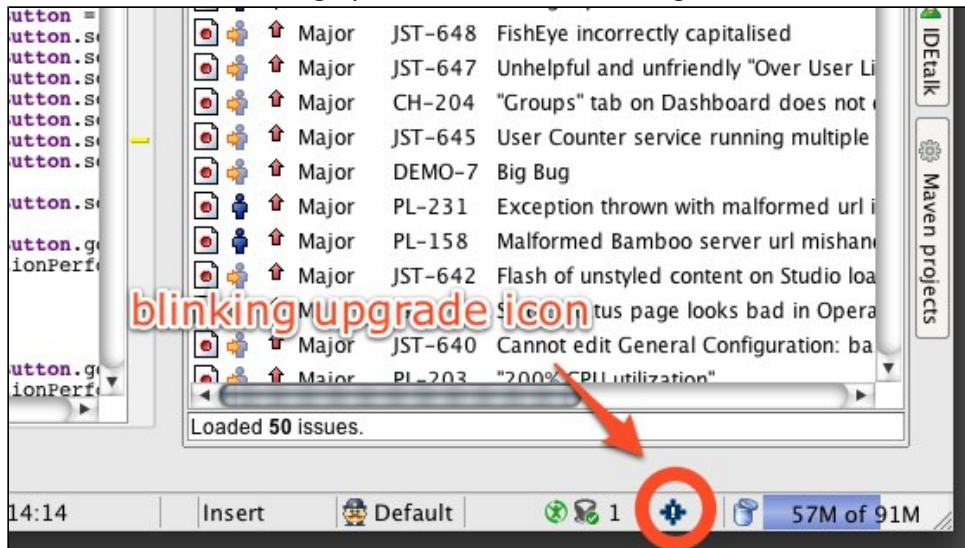
This page last changed on Apr 08, 2008 by [smaddox](#).

The Atlassian IDE Plugin provides both an auto-upgrade option and a manual upgrade option. Both options are described below.

Allowing the Auto-Upgrade

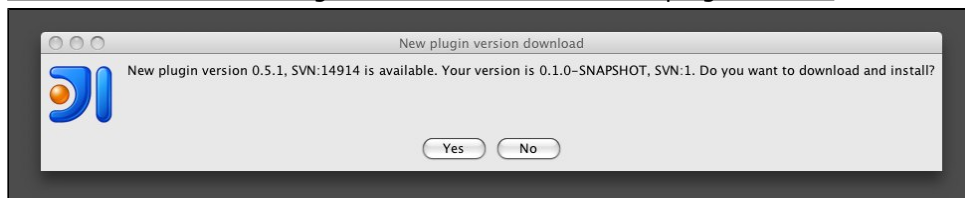
The Atlassian IDE Plugin will inform you when a later version is available. Just click the flashing icon on your [IDEA](#) status bar.

Screenshot: IDEA showing update available for IDE Plugin



When you click the icon, a dialog box will pop up allowing you to install the new version and restart IDEA. You can also choose to reject the upgrade.

Screenshot: IDEA showing information about the new plugin version



If you choose to reject the upgrade, you will not be notified again about the availability of this particular new version. You will be notified about the next version we release.

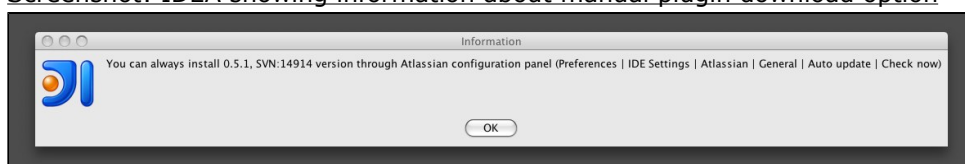
If you later change your mind and decide to upgrade after all, you can always trigger the upgrade manually, as described below.

Triggering the Upgrade Manually

You can start the upgrade manually at any time, from the plugin's control panel. Click 'Preferences'... 'IDE Settings'... 'Atlassian'... 'General'... 'Auto update'... 'Check now'.

This option is also described in the upgrade information box, as shown in the screenshot below.

Screenshot: IDEA showing information about manual plugin download option



RELATED TOPICS

[Installing the IDE Plugin for IDEA](#)

IDE Plugin Release Notes

This page last changed on Apr 08, 2008 by [smaddox](#).



Current released version

Atlassian IDE Plugin 1.0 has now been released — see the [Atlassian IDE Plugin 1.0 Release Notes](#)

- [Atlassian IDE Plugin 1.0 Release Notes](#)

Atlassian IDE Plugin 1.0 Release Notes

This page last changed on Apr 10, 2008 by [smaddox](#).

10 April 2008

Atlassian is delighted to present the Atlassian IDE Plugin. The plugin is an addon for your integrated development environment (IDE). It allows you to pull in and work with the Atlassian products within your IDE. Now you don't have to switch between websites, email messages and news feeds to see what's happening to your project and your code. Instead, you can see the relevant [JIRA](#) issues, [Bamboo](#) build information and [Crucible](#) reviews right there in your development environment.

We are releasing version 1.0 of the plugin as a work in progress. Let us know what you think of it! Log your praise, ideas, feature requests and other issues in our [JIRA issue tracker](#).

At the moment, the Atlassian IDE Plugin is available for [IDEA 7.0.2](#) and above. In the future we will develop plugins for other IDEs, such as [Eclipse](#) and [Visual Studio](#).

Want it?

Follow our easy [installation instructions](#).

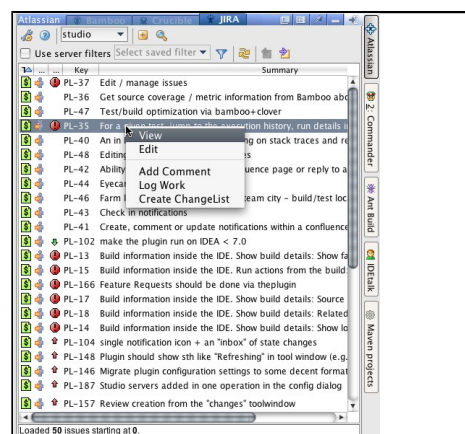
This is an open source project. You can get the source code from [our SVN repository](#).

Use these Atlassian products right there in your IDE

1

JIRA — because you've got issues

- [Use JIRA](#) integrated into your IDE.
- [Connect](#) to one or more JIRA servers.
- View all relevant JIRA feature requests, bug reports and other issues.
- Add a new issue or comment on an existing one.
- Create a changelist based on an issue, automatically adding the issue name as a comment when you commit the changes. (A changelist, or change set, is a collection of code changes committed at the same time.)




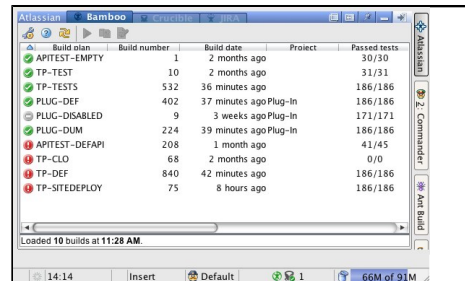
2

Bamboo — the Zen of continuous integration


- [Monitor your builds](#) while you work.
- [Connect](#) to one or more Bamboo servers.

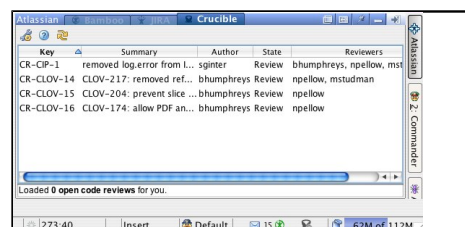
3

- An icon  in the IDE status bar glows green or red, showing the latest build status.
- When a build fails, a popup window warns you of the problem.
- View your Bamboo plans, add labels and comments, and re-run a build when necessary.



Crucible — peer code review made painless

- [Monitor your code reviews](#) within your IDE.
- [Connect](#) to one or more Crucible servers.
- An icon  in the IDE status bar lets you know when a review needs your attention.
- A popup window appears whenever a new pending review is created.
- Kick off a review of the code you have just written.



Known Issues in This Release

We have an enthusiastic and dedicated group of testers and customers who jump in there, try out the new Atlassian IDE Plugin release, and report any problems so that we can fix them quickly. Here's a [list of known issues](#).

A big [thank you](#) to everyone who provides feedback. Please keep logging issues and voting for them. And we'll keep plugging away at improving the plugin!

IDE Plugin User Guide

This page last changed on Apr 08, 2008 by [smaddox](#).

The Atlassian IDE Plugin is an add-on for your integrated development environment (IDE). It allows you to pull in and work with the Atlassian products within your IDE. Now you don't have to switch between websites, email messages and new feeds to see what's happening to your project and your code. Instead, you can see the relevant [JIRA](#) issues, [Crucible](#) reviews, [Bamboo](#) build information right there in your development environment.

The IDE Plugin User Guide tells you how to set up and use your Atlassian IDE Plugin, once you have [installed it into your IDE](#).

Table of Contents

- [Configuring the Plugin](#)
- [Using Bamboo in your Plugin](#)
- [Using Crucible in your Plugin](#)
- [Using JIRA in your Plugin](#)
- [IDE Plugin Keyboard Shortcuts](#)

Configuring the Plugin

This page last changed on Apr 10, 2008 by [jgorycki](#).

The plugin configuration panel displays the version number of the plugin that you are currently using and its SVN repository version.

You can also:

- Define the servers that the plugin connects to.
- Modify the behaviour of the plugin in certain situations.
- Report bugs and request new features for the plugin.
- Open online help on configuring the plugin (namely, this page).

On this page:

Error formatting macro: toc: java.lang.NullPointerException

Accessing the Plugin Configuration Panel

There are two ways to open the configuration panel:

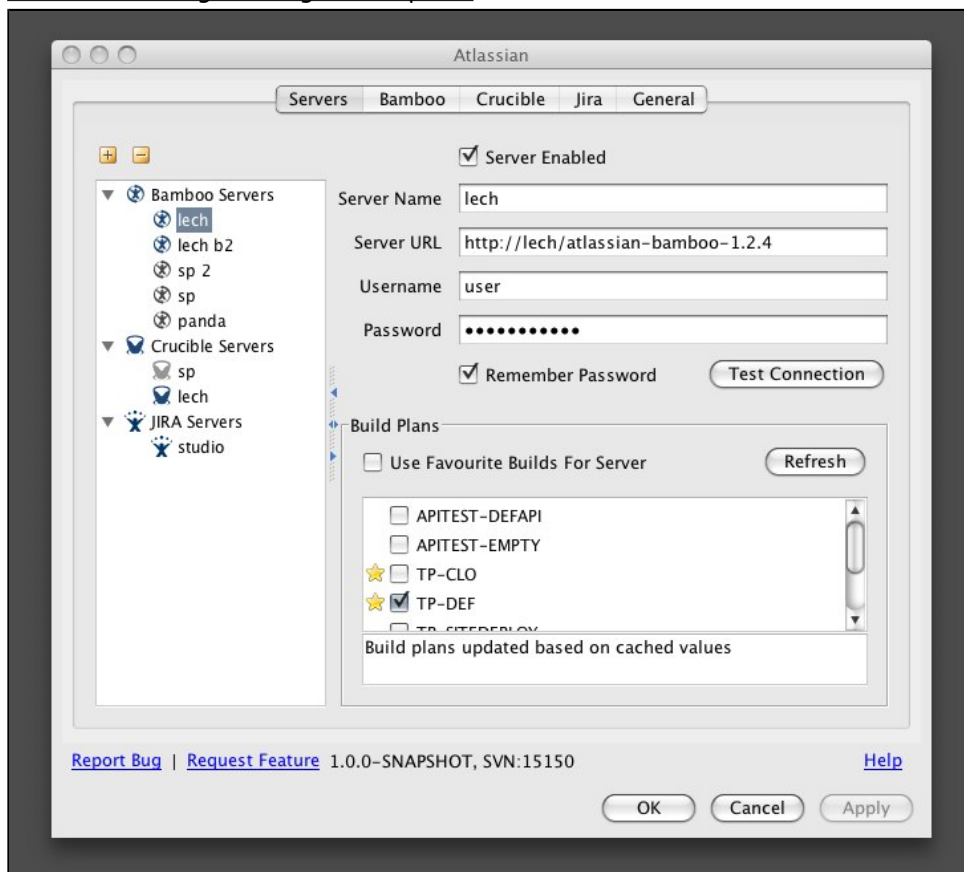
- Go to the IDEA settings dialogue, open 'IDE Settings' and click the 'Atlassian' icon.
- Or click the configuration icon



on your plugin window.

The 'Servers' tab of the configuration panel will open, as shown in the screenshot below.

Screenshot: Plugin configuration panel



Reporting Bugs and Requesting New Features

Click the following links on the configuration panel:

- Report Bug — This will open a bug-creation page in the plugin's [JIRA issue tracker](#). It will automatically populate the plugin version number and details of the environment (Java version and vendor, OS details, build number of IDEA in use).
- Request Feature — This will open an issue-creation page of the 'Story' type in the plugin's [JIRA issue tracker](#). This issue type is used by the plugin team to track requests for new plugin functionality.

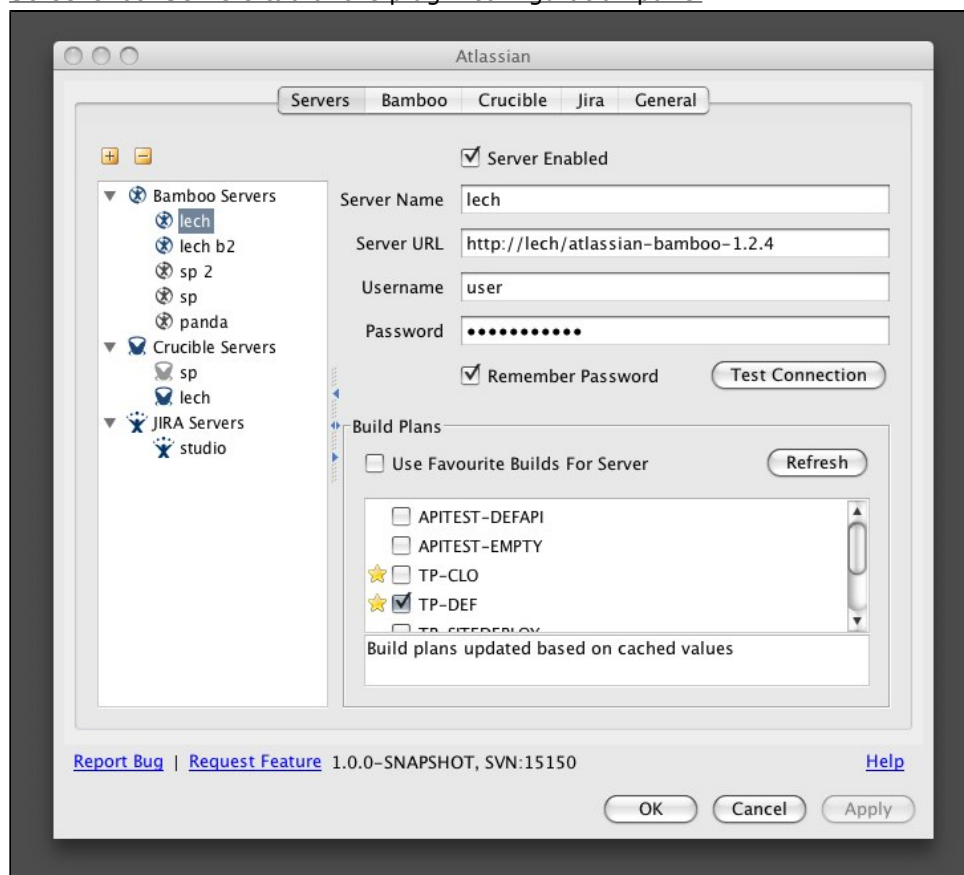
Getting Help

Click the 'Help' link on the configuration panel. This will open the online documentation page which tells you how to configure the plugin — namely, this page. From here, you can click the links to view other online documentation pages.

If you're looking for support or other help, please take a look at the links on our [documentation home page](#).


Configuring your Server Connections

Screenshot: Servers tab of the plugin configuration panel




The 'Servers' tab allows you to define the servers that the plugin connects to.

To add a server:


1. Click the plus icon  on the configuration panel.
2. Select the server type: 'Bamboo', 'Crucible' or 'JIRA'.
3. Enter the server name, server URL and your username and password.
4. Click the 'Test Connection' button to check that the connection to the server works.

Other configuration options:

- Server Enabled — You can enable or disable particular servers without deleting them. This is useful if your servers are behind a firewall and you don't have access to them.

- Remember Password — You have an option to save your password on disk or to be asked for it every time you start IDEA.
-  If you choose to remember the password, it is stored in a Base64 encoding, so it is not really secure.
- Build Plans — For Bamboo servers, you can select build plans that the plugin will watch. You can either select plans manually from the list of plans defined on the Bamboo server, or simply use your favourite plans defined on the server.

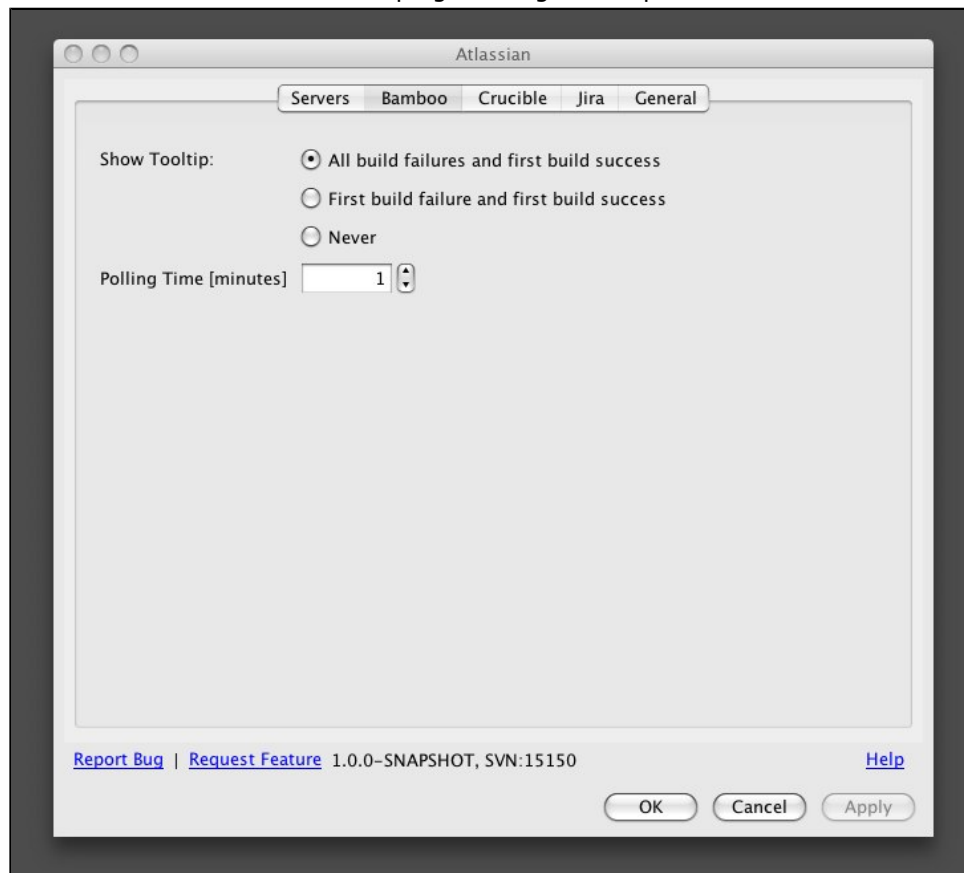
To remove a server from the list:

1. Select the server.
2. Click the minus icon  on the configuration panel.

on

Configuring the Plugin's Bamboo Options

Screenshot: Bamboo tab of the plugin configuration panel

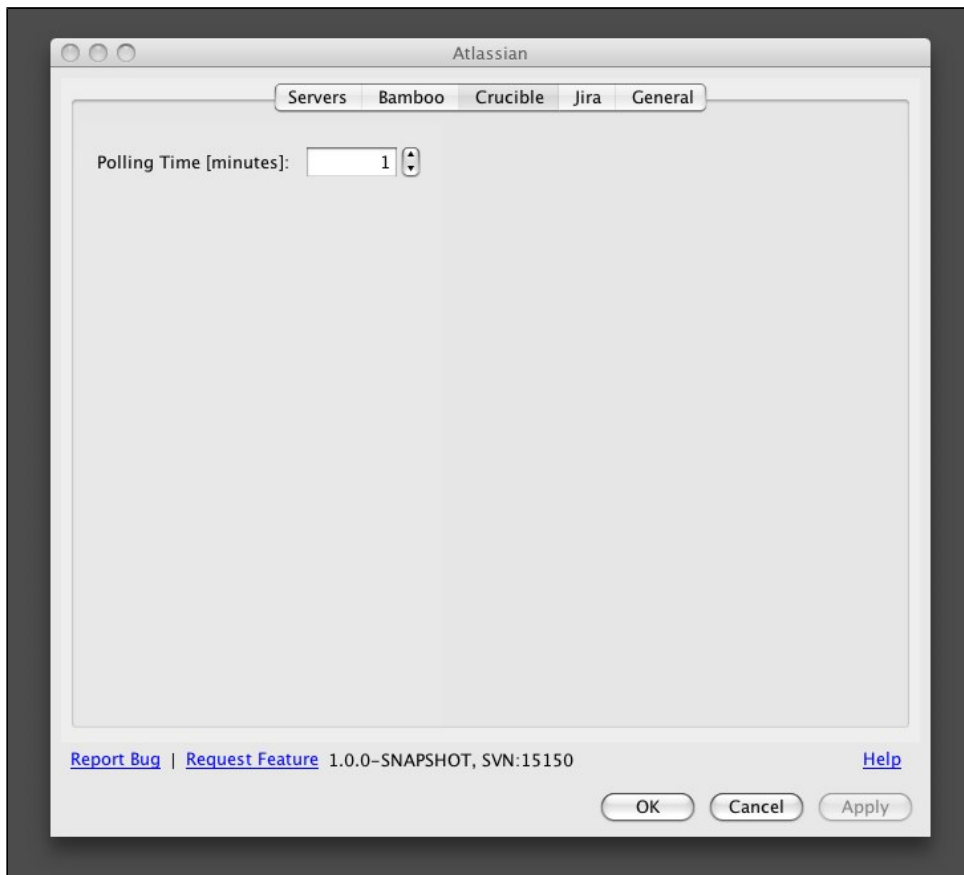


The 'Bamboo' tab is used to define:

- The polling interval that the plugin will use to monitor build plans on all defined Bamboo servers. Specify the value in minutes.
- The behaviour of the popup window that is shown when the status of the build changes. (See [Using Bamboo in your Plugin.](#))

Configuring the Plugin's Crucible Options

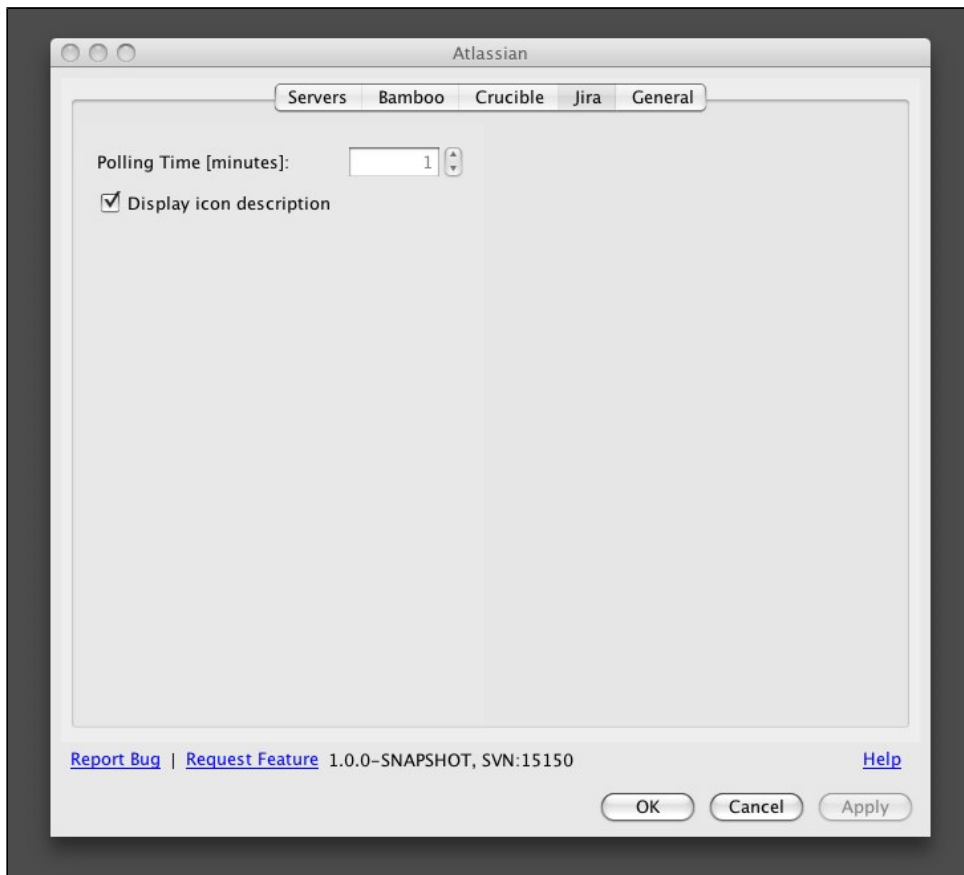
Screenshot: Crucible tab of the plugin configuration panel




The 'Crucible' tab is used to define the polling interval that the plugin will use to monitor all defined Crucible servers. Specify the value in minutes.

Configuring the Plugin's JIRA Options

Screenshot: JIRA tab of the plugin configuration panel

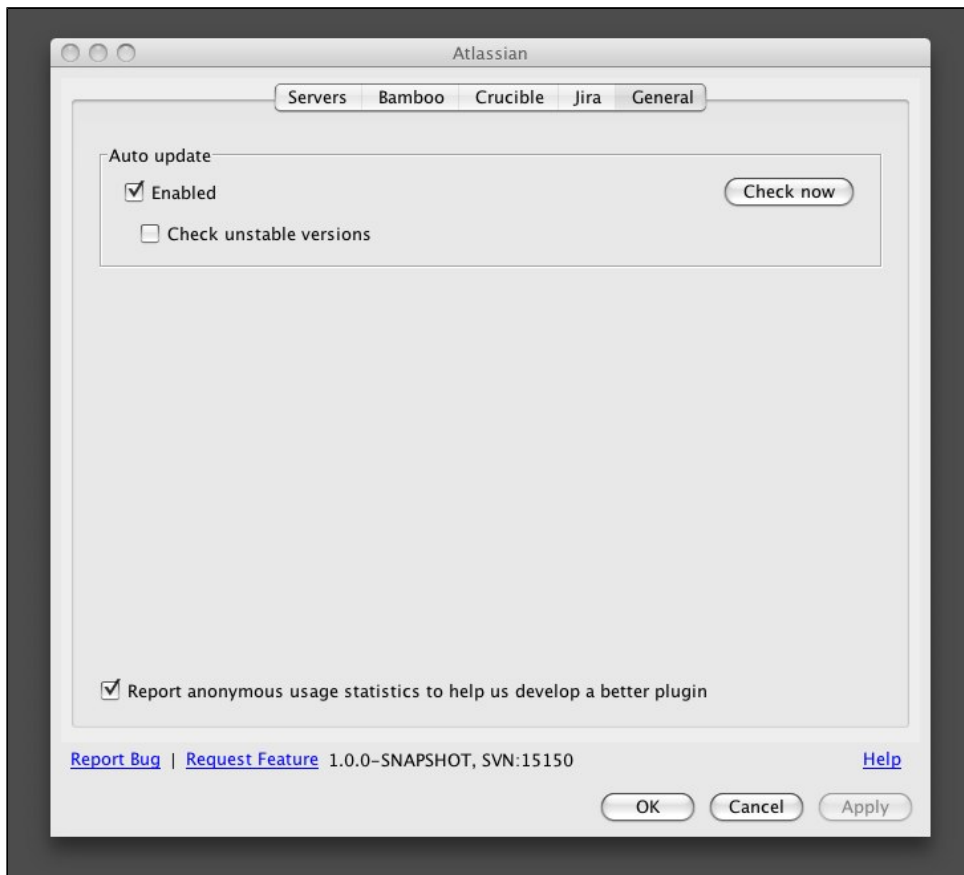


The 'JIRA' tab is used to:

- Define the polling interval that the plugin will use to monitor all defined JIRA servers. Specify the value in minutes.
 -  This feature is not currently used.
- Determine whether a textual description of the JIRA issue type, status and priority should be shown next to their icons in the JIRA issue list.

Configuring General Plugin Options

Screenshot: General tab of the plugin configuration panel



The 'General' tab is used to:

- Enable or disable the plugin auto-update feature. Refer to the [IDE Plugin Upgrade Guide](#).
- Enable or disable the collection of anonymous plugin usage statistics. This feature is disabled by default. We ask you to decide whether you agree to participate in the statistics collection on the first opening of the plugin configuration panel. If you agree to take part, the plugin will send [Atlassian](#) the unique ID generated by the plugin on its first installation. No other information is collected.

RELATED TOPICS

[IDE Plugin User Guide](#)
[IDE Plugin Documentation](#)

Using Bamboo in your Plugin

This page last changed on Apr 09, 2008 by [smaddox](#).

The Atlassian IDE Plugin gives you [Bamboo](#) build information right there in your integrated development environment.

On this page:

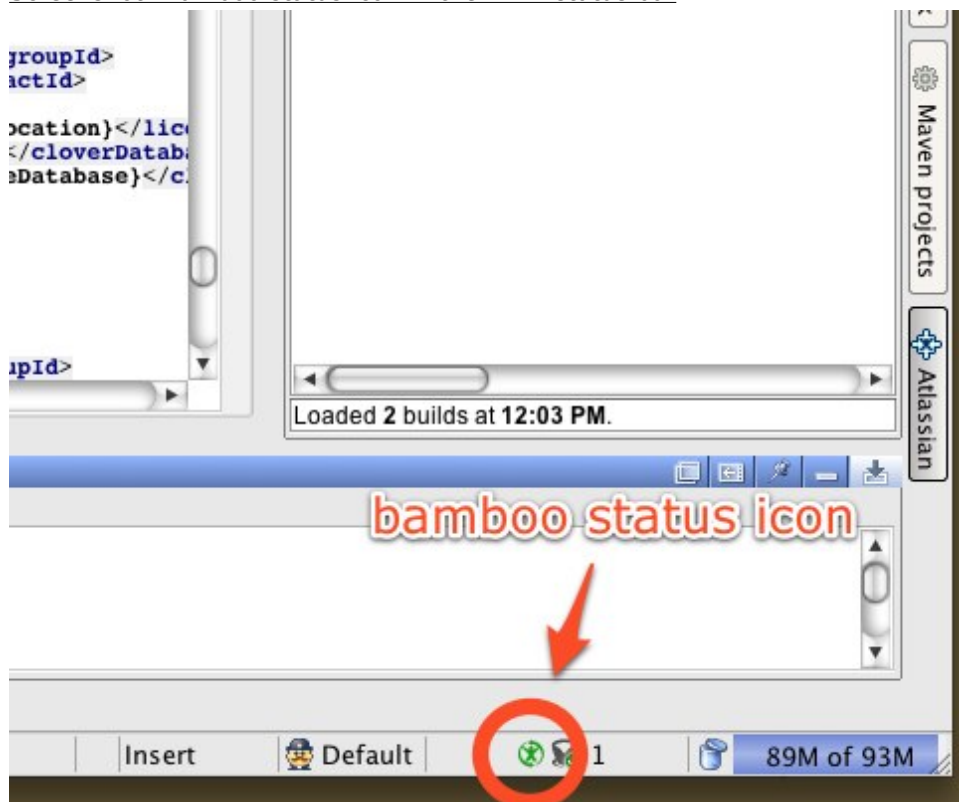
Error formatting macro: toc: java.lang.NullPointerException

Bamboo Icon

After you have defined [the Bamboo servers and plans to monitor](#), the icon in the status bar shows the summary status of builds. If at least one build is currently failing, the icon is **red**, otherwise it is **green**.

In addition, when the summary status changes (e.g. when a build fails), a popup window appears to warn you of the problem.

Screenshot: Bamboo status icon in the IDEA status bar



Click the status icon to open a Bamboo tab in the plugin window, where detailed information is shown.

Contents of the Bamboo Tab in the Plugin Window

The Bamboo tab of the plugin window shows information about all plans of all servers defined in the [plugin configuration panel](#).

i The set of information is different for Bamboo 1.x and Bamboo 2.x servers. Bamboo 2.x servers can return more detailed information than Bamboo 1.x.

Screenshot: Bamboo tab in the plugin window

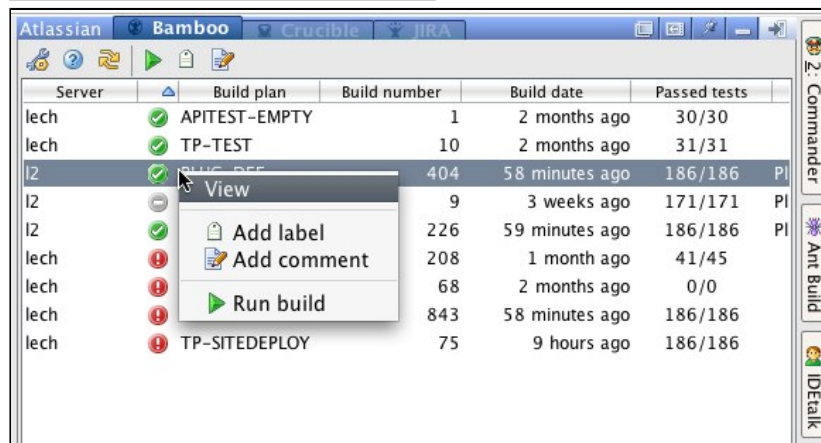
Build plan	Build number	Build date	Project	Passed tests
APITEST-EMPTY	1	2 months ago		30/30
TP-TEST	10	2 months ago		31/31
TP-TESTS	532	36 minutes ago		186/186
PLUG-DEF	402	37 minutes ago	Plug-In	186/186
PLUG-DISABLED	9	3 weeks ago	Plug-In	171/171
PLUG-DUM	224	39 minutes ago	Plug-In	186/186
APITEST-DEFAPI	208	1 month ago		41/45
TP-CLO	68	2 months ago		0/0
TP-DEF	840	42 minutes ago		186/186
TP-SITEDEPLOY	75	8 hours ago		186/186

Loaded 10 builds at 11:28 AM.

You can perform the following functions for each line in the list:

- Double-click a line to open the selected plan in a new browser window.
- Right-click a line to show a popup context menu (pictured below) with actions that can be performed for a Bamboo plan.
 - For Bamboo 1.x, the only available action is 'Run build', which re-runs the last build of the selected plan.
 - For Bamboo 2.x, the list of available actions includes:
 - View — Open the selected plan in a new browser window.
 - Add label — Label a build. (See [below](#).)
 - Add comment — Add a comment to a build. (See [below](#).)
 - Run build — Re-run the last build of the selected plan.

Screenshot: Bamboo context menu



The tool bar above the list of plans provides more functionality:

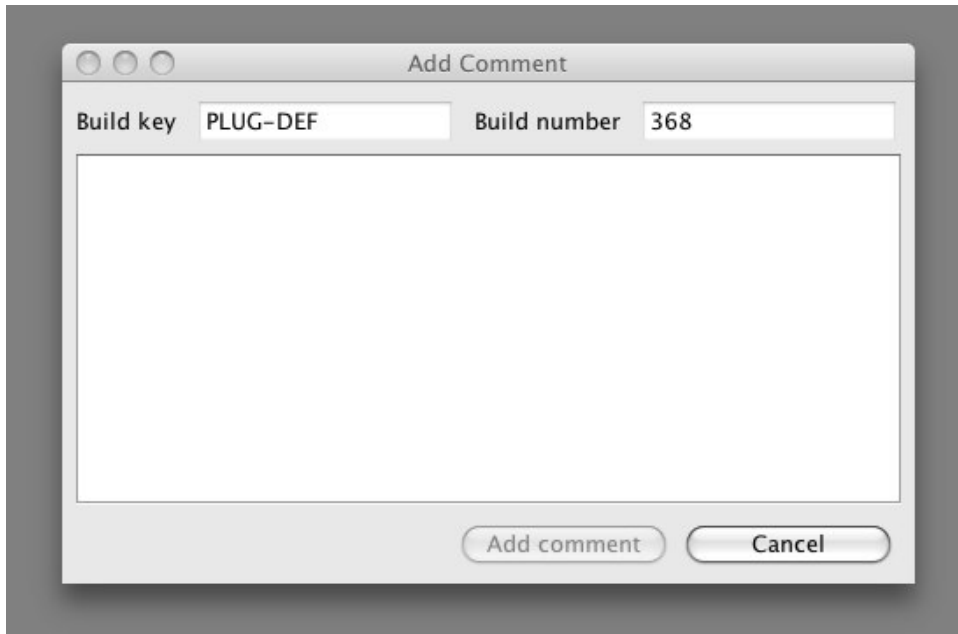
- — Open the plugin configuration panel.
- — Get help on the usage of the Bamboo tab (i.e. open this page in your browser).
- — Refresh the contents of the list by polling the configured Bamboo servers.
- — Re-run the last build of the selected plan.
- — Label a build. See [below](#).)
- — Add a comment to a build. (See [below](#).)

Commenting on a Build

You can add a comment to the latest build in the plan:

1. Right-click on the plan and select 'Add comment' from the [popup context menu](#), or select the comment icon from the [tool bar](#).
2. A dialog box opens, as shown below. Enter your comment text.

Screenshot: Adding a build comment

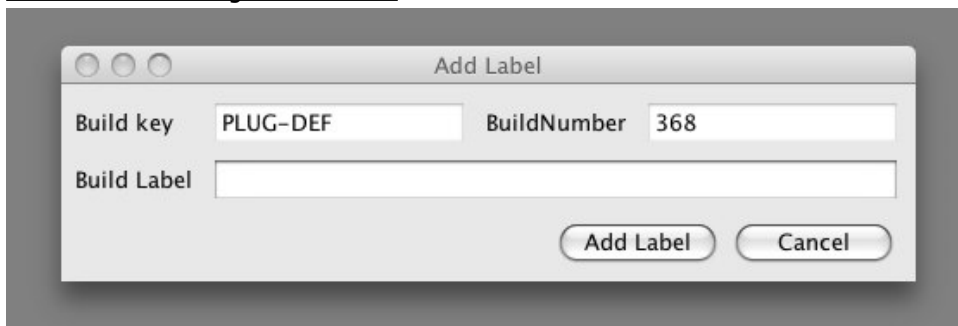


Labelling a Build

You can add a label to the latest build in the plan:

1. Right-click on the plan and select 'Add label' from the [popup context menu](#), or select the label icon from the [tool bar](#).
2. A dialog box opens, as shown below. Enter your label text.

Screenshot: Adding a build label



RELATED TOPICS

[Configuring the Plugin](#)
[IDE Plugin User Guide](#)

Using Crucible in your Plugin

This page last changed on Apr 09, 2008 by [smaddox](#).

The Atlassian IDE Plugin allows you to conduct [Crucible](#) reviews right there in your integrated development environment.

On this page:

Error formatting macro: toc: java.lang.NullPointerException

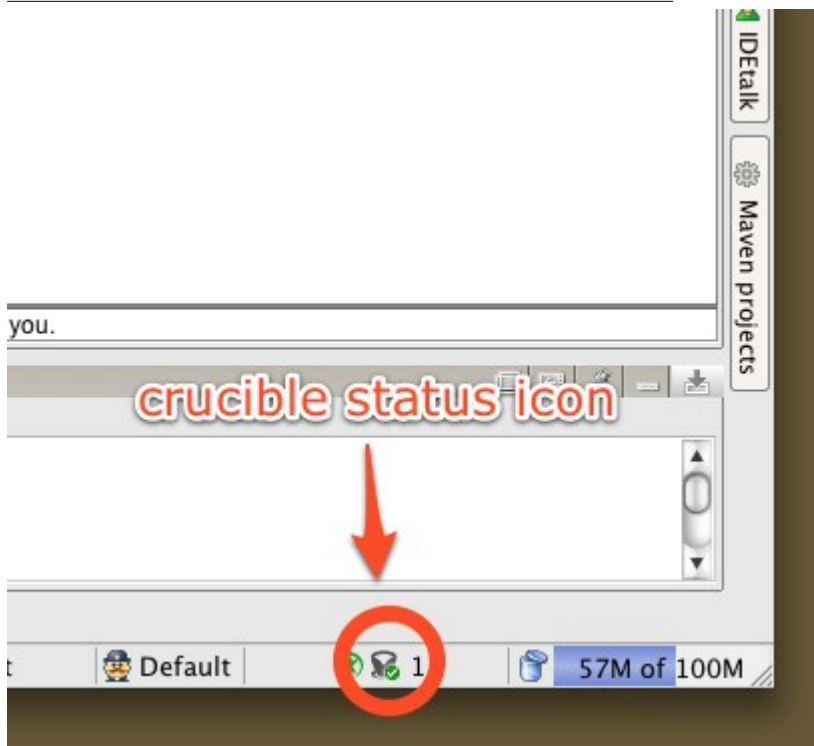
Crucible Status Icon

After you have defined at least one Crucible server in the [plugin configuration panel](#), the Crucible status icon is displayed in the status bar. The icon has the following states:

- Grey when there are no reviews pending for which you have been made a reviewer by the review author or moderator.
- Grey with a green tick ✓ and a number of pending reviews next to it, when there is at least one pending review which has not already been seen in the Crucible tool window tab.

In addition to the icon, a popup window appears whenever a new pending review becomes available on the Crucible server.

Screenshot: Crucible status icon in the IDEA status bar

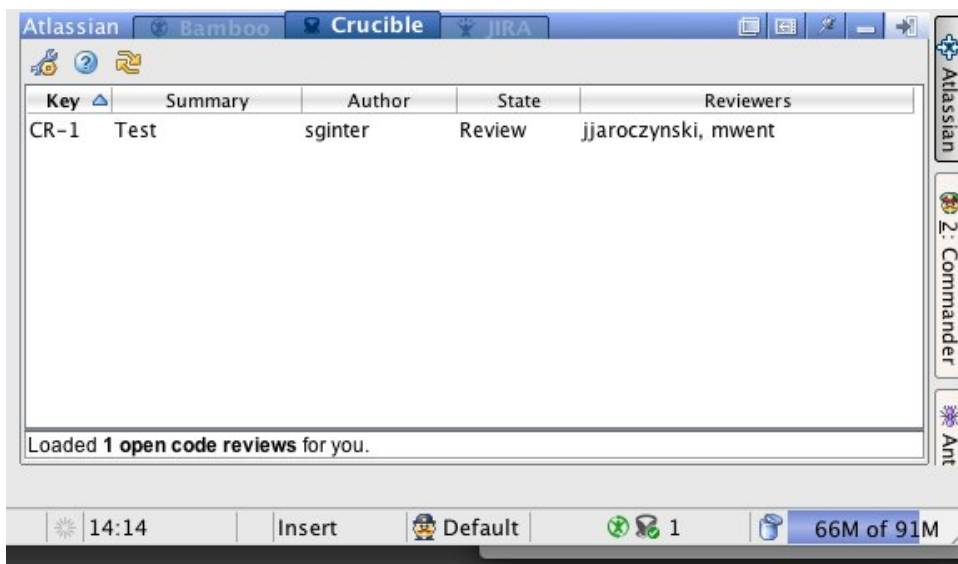


Click the Crucible icon to open a Crucible tab. The icon state will be reset to grey.

The Contents of the Crucible Tab in the Plugin Window

The Crucible tab in the plugin window shows the list of reviews for which you have been made a reviewer.

Screenshot: Crucible tab in the plugin tool window



You can perform the following functions for each line in the list:

- Double-click a line, or right-click and select 'View', to open the selected review in a new browser

Above the review list, there is a row of buttons with the following functions:

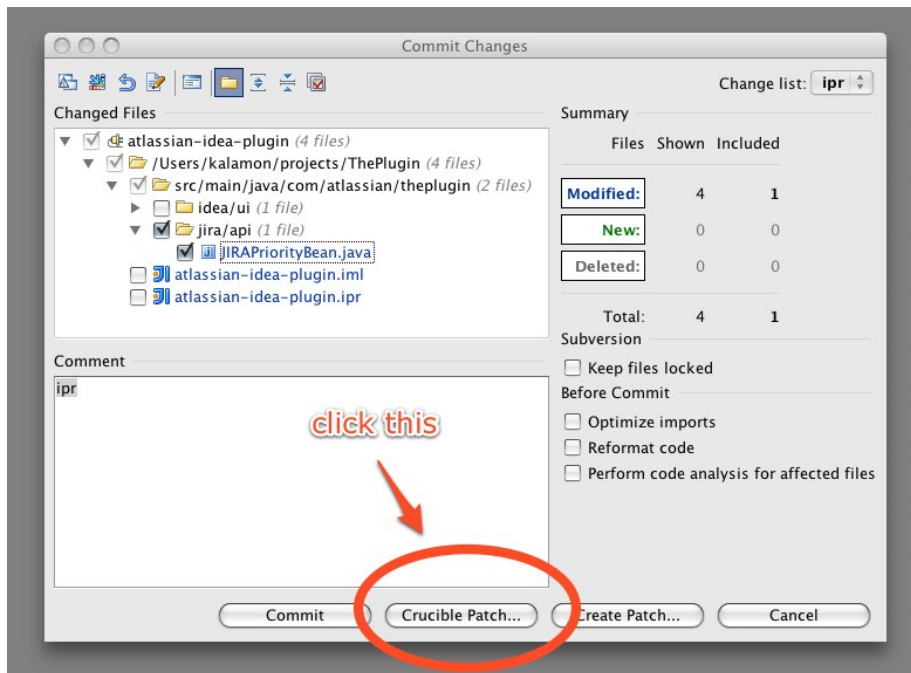
- — Open the plugin configuration panel.
- — Get help on the usage of the Crucible tab (i.e. open this page in your browser).
- — Refresh the status of the reviews in the list by polling defined Crucible servers.

Initiating the Review

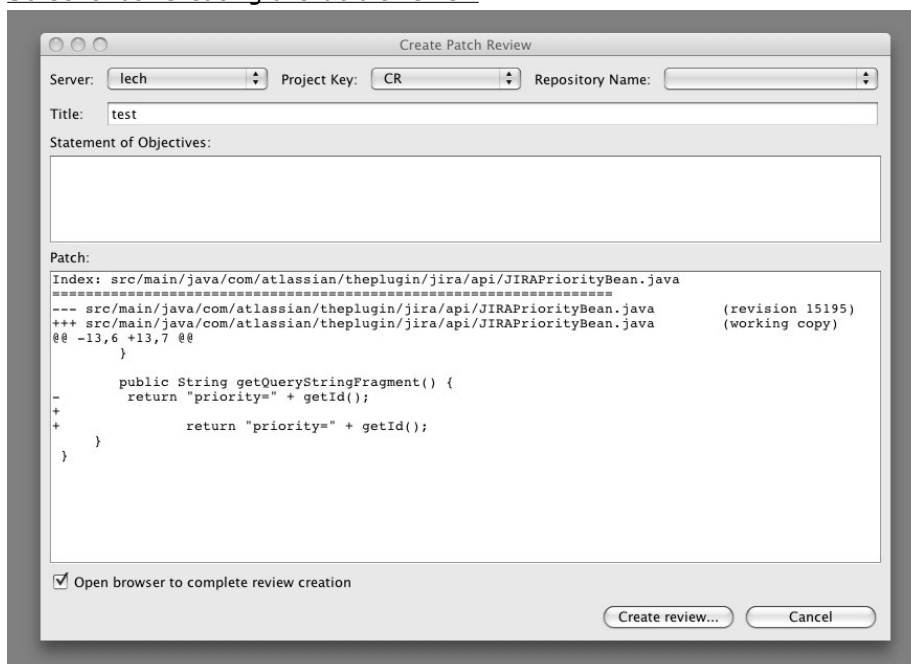
To initiate a review of the code you have just created:

1. Invoke the `VCS Commit` dialogue on the set of changes you want to have reviewed (file, directory, change set or project). For example, invoke the `Subversion -> Commit` if SVN is your version control system (VCS) of choice.
2. This opens the 'Commit Changes' dialogue (pictured below), to which the plugin adds a 'Crucible Patch...' button.

All other functionality of the 'Commit Changes' dialogue remains unchanged.
Screenshot: Subversion commit dialogue with the 'Create Crucible Review' button



3. Click the 'Crucible Patch...' button.
4. This opens the 'Create Patch Review' screen, pictured below.
Screenshot: Creating a Crucible review



The fields on the 'Create Patch Review' dialogue are the same as the ones in the Crucible web UI. Additionally, the dialogue contains a read-only view of the patch to be reviewed in the 'Universal diff' format. In brief, the dialogue allows you to:

- Select a Crucible server, the project key and the version control system (VCS) repository key, if you choose to use one.
 - Define the review title.
 - State the review objectives.
5. Place a tick in the 'Open browser to complete review creation' checkbox if you want to open the newly created review in a browser window. This allows you to define the moderator and reviewers and perform other tasks to finalise the review creation.
 6. Click the 'Create review...' button to create the review on the Crucible server.

Refer to the [Crucible documentation](#) for more information about Crucible reviews.

RELATED TOPICS

[Configuring the Plugin](#)
[IDE Plugin User Guide](#)

Using JIRA in your Plugin

This page last changed on Apr 10, 2008 by [smaddox](#).

The Atlassian IDE Plugin allows you to monitor, add and update [JIRA](#) issues right there in your integrated development environment.

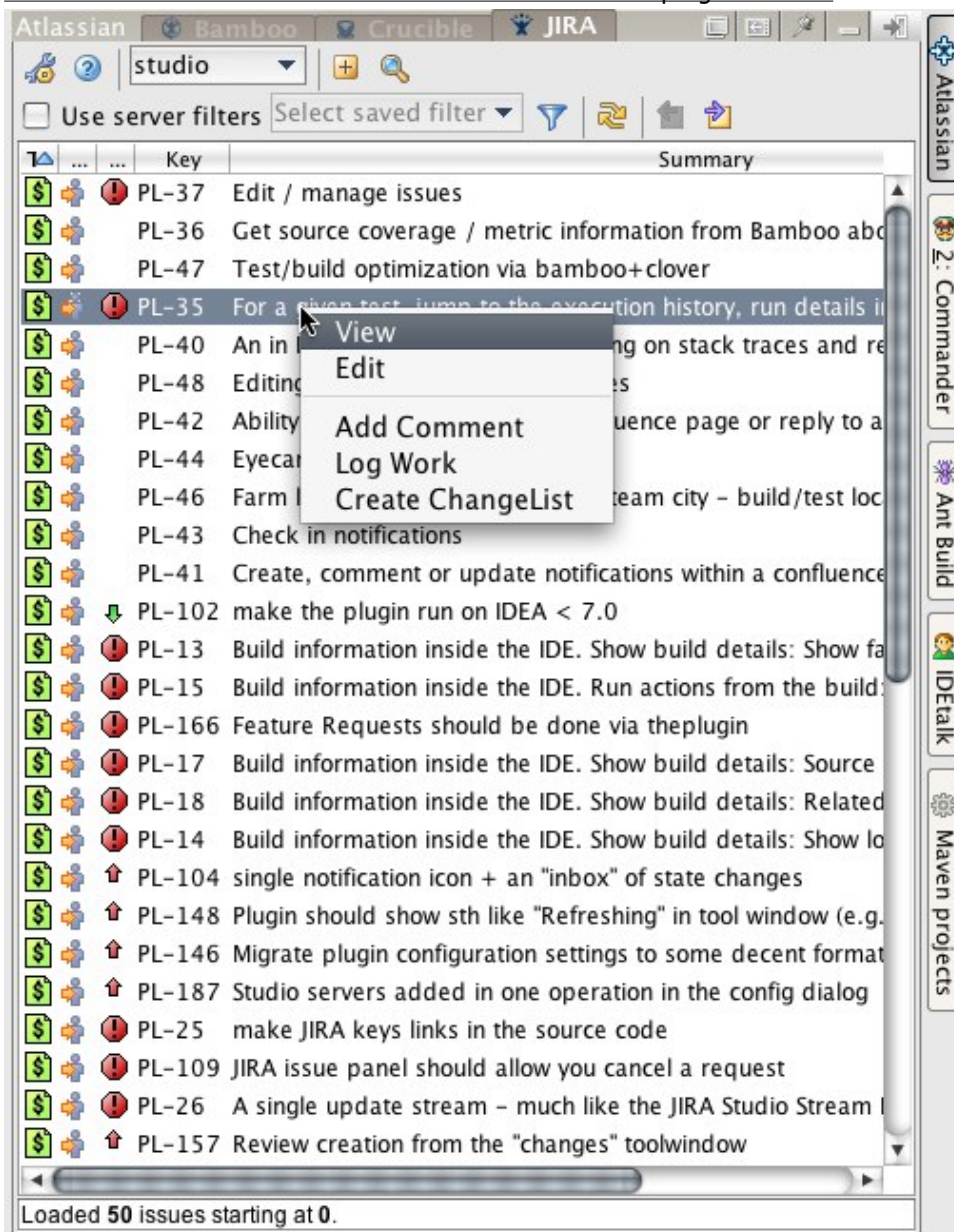
On this page:

Error formatting macro: toc: java.lang.NullPointerException

Contents of the JIRA Tab in the Plugin Window

The JIRA tab of the plugin window shows a list of issues on the selected JIRA server. To build this list, you will use a filter defined either locally in the plugin window, or as a filter saved on the JIRA server. There are more guidelines on filters [below](#).

Screenshot: JIRA context menu in the JIRA tab of the plugin window



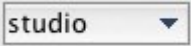








You can perform the following functions for each line in the list:

- Double-click a line to open the selected issue in a new browser window.

- Right-click a line to show a popup context menu (pictured above) with actions that can be performed for the selected issue:
 - View — Open the selected issue in a new browser window.
 - Edit — Open the selected issue for editing in a new browser window.
 - Add Comment — Add a comment to the issue. (See [below](#).)
 - Log Work — Record the time worked against the issue.
 - Create Changelist — Add a changelist relating to the issue. (See [below](#).)


The tool bar above the list of issues provides more functionality:

-  — Open the [plugin configuration panel](#).
-  — Get help on the usage of the JIRA tab (i.e. open this page in your browser).
-  — Select your JIRA server from the list of [configured servers](#).
-  — Add a JIRA issue. (See [below](#).)
-  — Quick search for issue (launches a web browser).
- ☐ Use server filters — Tick this box if you want to use a filter from the JIRA server. If not ticked, you will define a local filter in the plugin window. (See [below](#).)
-  — Select a filter defined on the JIRA server. (See [below](#).)
-  — Define a local filter. (See [below](#).)
-  — Refresh the contents of the list by re-running the currently defined filters.
-  — Page through search results.

Filtering the List of Issues

1. First, select your JIRA server from the dropdown list in the tool bar. This list will show all JIRA servers defined in the [plugin configuration panel](#).
2. Now you will see all relevant JIRA issues on that server.
 - The plugin will 'remember' your selection of the JIRA server and filter next time you start IDEA.
3. Decide how to filter the issues on the server — there are two ways to do this:
 - Use the filters defined on the JIRA server. These filters cannot be modified by the plugin. You can run the filter and display results in the JIRA tool window of the plugin.
 - Or define your filter locally in the plugin window and send the filter values to the JIRA server.

Using Filters Defined on the JIRA Server

1. Put a tick in the 'Use server filters' checkbox in the plugin window.
2. Select the saved filter from the dropdown list. This list will show all saved filters which you have permission to view on the JIRA server.
3. Click the 'Refresh' icon .

For more information on JIRA filters, please refer to the [JIRA documentation](#).

Using Filters Defined in the Plugin

Screenshot: Defining a filter in the JIRA tab of the plugin window

Atlassian | Bamboo | Crucible | JIRA

studio

Project: Any
Clover
Confluence Hosted
DEFUNCT: Clover IDEA plugin
Demo Project - Stream

Issue Type: Any
Bug
Task
Story

Components/Versions

Fix For: Any
No version
Released versions
0
0.0.1

Components: Any
No component
Bamboo
Confluence
Crucible

Affects Versions: Any
No version
Released versions
0
0.0.1

Issue Attributes

Reporter: Any User



Assignee: Any User

Status: Any
Open
In Progress
Reopened




Resolutions: Any
Unresolved
Fixed
Won't Fix

Priorities: Any
Blocker
Critical
Major

Loaded 50 issues starting at 1.


1. Click the  icon to open the filter definition panel of the JIRA tab, as pictured above. The filter definition panel provides a number of criteria which you can use to filter the issues. You can collapse and expand sections of the panel by clicking the arrow icons on the left of the panel.
2. Select one or more criteria.
For each criterion, you can select multiple values by Control-clicking (Windows/Linux) or Command-clicking (OS X) on them.
3. Click the 'Apply' icon  to apply and save your filter.

The filter definition view contains the following icons:


-  — Applies the defined filter and saves it, so that it is used on next IDEA restart.
-  — Cancels the definition of the filter and opens the issue list view.
-  — Resets the filter to default values.

Creating a New JIRA Issue

Screenshot: Creating a New JIRA issue



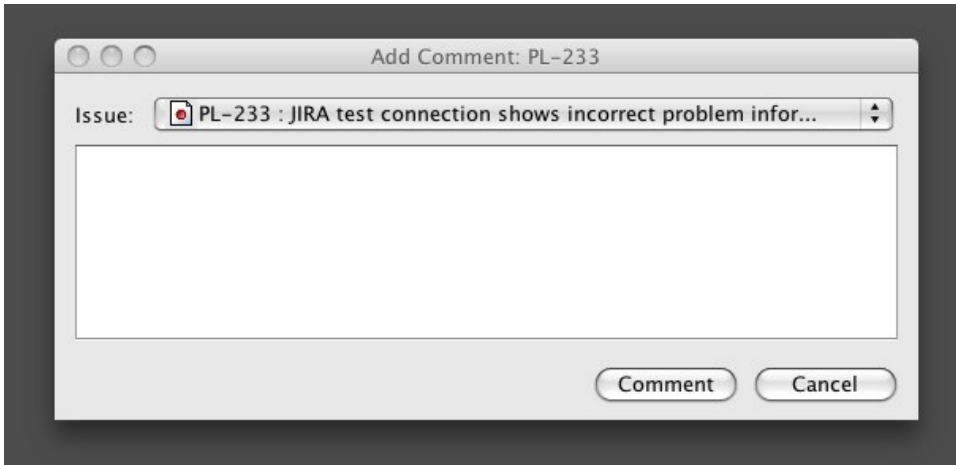
To add a new JIRA issue:

1. Select your JIRA server from the dropdown list on the tool bar.
2. Click the plus icon  on the tool bar.
3. A dialogue box opens, as shown below. The information requested is the same as required when you add an issue using the JIRA UI:
 - Project — The JIRA project on the JIRA server.
 - Type — The issue type, as defined within the JIRA project.
 - Priority — The priority of the issue.
 - Summary — The title of your JIRA issue.
 - Description — A detailed description of the problem you wish to record or the feature you wish to request.
4. Click the 'Create' button to add the issue to the selected JIRA server.

For more information on JIRA, please refer to the [JIRA documentation](#).

Commenting on a JIRA Issue

Screenshot: Commenting a JIRA issue



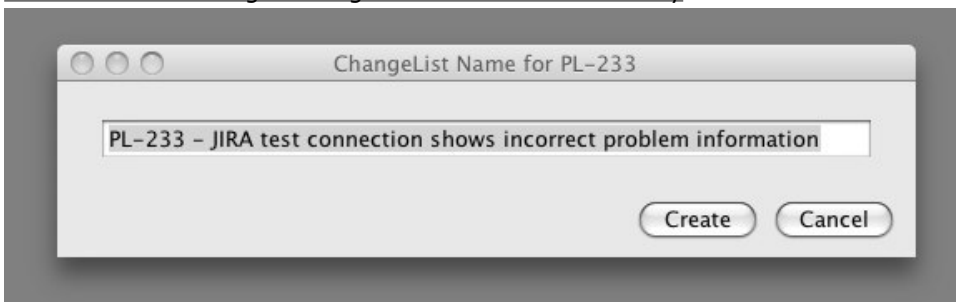
To add a comment to an existing JIRA issue:

1. Select your JIRA server from the dropdown list in the tool bar.
2. Use the [filter and search](#) functions to find your issue.
3. Right-click the issue in the list and select 'Add Comment'.
4. A dialogue box appears, as pictured below. Add your comment text.
5. Click the 'Comment' button to append the comment to the issue on the JIRA server.

Creating a Changelist from a JIRA Issue

A changelist, or change set, is a collection of code changes committed at the same time. You may want to create a changelist in IDEA, based on the issue key and description from JIRA. This eases working on several issues simultaneously — you can drag and drop files you have modified from one changelists to another, and commit the whole changelist in one operation. The commit dialogue's comment box will be pre-populated with the name of the changelist.

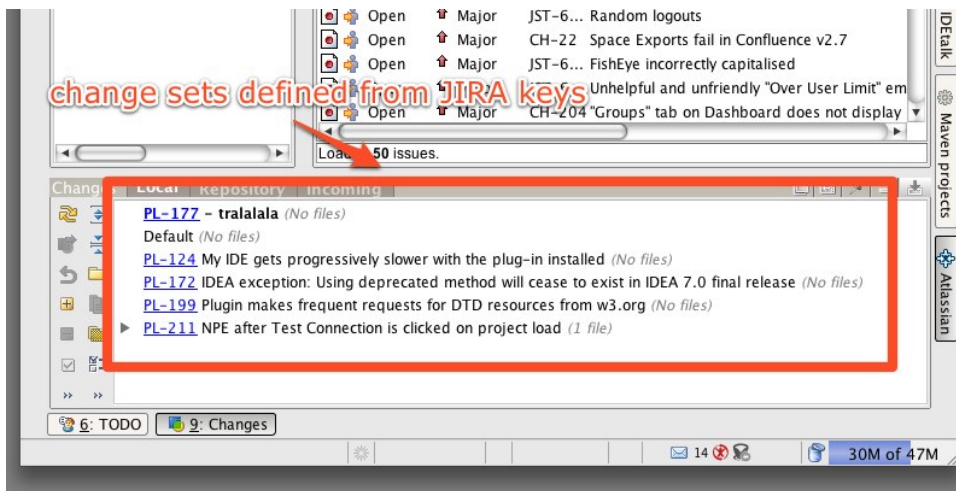
Screenshot: Creating a changelist from a JIRA issue key



To create a changelist from an existing JIRA issue:

1. Select your JIRA server from the dropdown list in the tool bar.
2. Use the [filter and search](#) functions to find your issue.
3. Right-click the issue in the list and select 'Create Changelist'.
4. A dialogue box appears, as pictured below.
5. Click the 'Create' button.

Screenshot: Changelists defined from the JIRA issue keys



RELATED TOPICS

[Configuring the Plugin](#)
[IDE Plugin User Guide](#)

IDE Plugin Keyboard Shortcuts

This page last changed on Apr 08, 2008 by [smaddox](#).

This page gives you some handy key combinations that you can press, to perform often-used functions.

Mac OS X

Tab and Main Window Actions

Key Combination	Function
Shift-Command-B	Show/hide Bamboo tab in main plugin window
Shift-Command-Y	Show/hide Crucible tab in main plugin window
Shift-Command-K	Show/hide JIRA tab in main plugin window
Shift-Command-G	Show plugin configuration window
Shift-Command-P	Show/hide main plugin window

JIRA Actions

Key Combination	Function
Shift-Alt-N	Create a JIRA issue
Shift-Alt-M	Comment on JIRA issue
Shift-Alt-S	Search for JIRA issue

Linux and Microsoft Windows

Tab and Main Window Actions

Key Combination	Function
Shift-Control-B	Show/hide Bamboo tab in main plugin window
Shift-Control-Y	Show/hide Crucible tab in main plugin window
Shift-Control-K	Show/hide JIRA tab in main plugin window
Shift-Control-G	Show plugin configuration window
Shift-Control-P	Show/hide main plugin window

JIRA Actions

Key Combination	Function
Shift-Alt-N	Create a JIRA issue
Shift-Alt-M	Comment on JIRA issue
Shift-Alt-S	Search for JIRA issue

RELATED TOPICS

[IDE Plugin User Guide](#)

IDE Plugin Knowledge Base

This page last changed on Apr 08, 2008 by [smaddox](#).

- [Icons](#)

Icons

This page last changed on Apr 08, 2008 by [smaddox](#).

This page is a library of icon images used in the plugin documentation.

Note to documentation authors














Use the icon images attached to this page, rather than attaching them to each individual page. That will make it easier to update the documentation if the plugin UI changes.




To use an image from this page:

```
!Icons^ImageName.png!
```

For example:

```
!Icons^BuildIcon.png!
```

	Name	Size	Creator (Last Modifier)	Creation Date	Last Mod Date	Comment	
	reset.png	0.6 kb	Sarah Maddox	Apr 10, 2008	Apr 10, 2008	Latest image	Edit Remove
	apply.png	0.9 kb	Sarah Maddox	Apr 10, 2008	Apr 10, 2008	Latest image	Edit Remove
	next.png	0.8 kb	Sarah Maddox	Apr 10, 2008	Apr 10, 2008	Transparent and smaller	Edit Remove
	RefreshIcon.png	0.8 kb	Sarah Maddox	Apr 10, 2008	Apr 10, 2008	Applied transparency	Edit Remove
	prev.png	0.8 kb	Sarah Maddox	Apr 10, 2008	Apr 10, 2008	Added transparent image	Edit Remove
	filter.png	0.6 kb	Sarah Maddox (modified by Sarah Maddox)	Apr 10, 2008	Apr 10, 2008	Applied transparency	Edit Remove
	cancel.png	0.6 kb	Sarah Maddox	Apr 10, 2008	Apr 10, 2008	Applied transparency	Edit Remove
	SearchIcon.png	0.7 kb	Sarah Maddox	Apr 10, 2008	Apr 10, 2008	Applied transparency	Edit Remove
	PlusIcon.png	0.8 kb	Sarah Maddox	Apr 10, 2008	Apr 10, 2008	Applied transparency	Edit Remove
	MinusIcon.png	0.8 kb	Sarah Maddox	Apr 10, 2008	Apr 10, 2008	Applied transparency	Edit Remove
	HelpIcon.png	0.8 kb	Sarah Maddox	Apr 10, 2008	Apr 10, 2008	Applied transparency	Edit Remove
	CrucibleIconPending.png	0.9 kb	Sarah Maddox (modified by Sarah Maddox)	Apr 10, 2008	Apr 10, 2008	Applied transparency	Edit Remove
	ConfigIcon.png	0.8 kb	Sarah Maddox	Apr 10, 2008	Apr 10, 2008	Applied transparency	Edit Remove
	BambooIconGreen.png	0.8 kb	Sarah Maddox	Apr 10, 2008	Apr 10, 2008	Applied transparency	Edit Remove

	1.0 kb	Sarah Maddox	Apr 10, 2008Apr 10, 2008Applied transparency	Edit Remove
	0.6 kb	Sarah Maddox	Apr 10, 2008Apr 10, 2008Applied transparency	Edit Remove
	0.2 kb	Sarah Maddox	Apr 09, 2008Apr 09, 2008	Edit Remove

__newreleaseIDEPlugin

This page last changed on Apr 09, 2008 by [smaddox](#).



Current released version

Atlassian IDE Plugin 1.0 has now been released — see the [Atlassian IDE Plugin 1.0 Release Notes](#)

TreeNavigation

This page last changed on Mar 21, 2008 by [smaddox](#).

[Index](#)